

PINHOUSES

HOUSE-MODULE



House-module

- movable, turnkey house to live.



READY FOR USE

In our supplied homes performed all interior kits, wiring and exterior finish, the utilities are installed.



INSULATION

Bathrooms are equipped with the necessary sanitary ware: toilet, shower, sink, water heater Ariston / Thermex, AQUAVERSO and mixers as GROHE and TEKA.

For settlement You can only connect to the central or local communications (electricity, sewerage, well or central water supply).



LEGAL

Ready house is transported on a standard platform trucks. In the carriage house does not require a special permit from the road services. House can be transported from one to another place.

In most countries, does not require a permit for the installation, due to the small footprint.



MOVABLE

The warmest in its class. Thermal insulation of walls, floors and ceilings mineral wool with a thickness of 250 to 350 mm. The supply of any home includes infra-red heating equipment HEAT PLUS from the leader in this field.

The design of the house allows to increase the area of the house and combine individual modules into a single finished complex, until the construction of the second floor.

For all its merits, it is the most affordable and flexible solution for the price of rapid construction of individual, family and commercial property, with the possibility of extension and movement.



BUDGET

The design of classical home made of materials such as metal, wood and composite materials based on cement. It does not contain toxic materials.

Main features

PINSECTOR.COM

HOUSE FRAME

Metall profile, wood timber

INSULATION

Non-flammable mineral wool. Thickness of 250-350 mm. Floor: 300 mm; Walls: 250 mm; Ceiling: 350 mm

WINDOWS

Windows and doors with efficient heat two or three pane glass filled with argon (depending on configuration).

WIRING

Hidden in the corrugation, complies with fire safety requirements.

WATER PIPES AND DRAINAGE

Hidden, protected against freezing of bringing external networks.

SANITARY

Equipped with all necessary sanitary ware: shower, sink, toilet, water boiler, the GROHE faucets, TEKA etc.

Power Distribution

- 1) External input and metering panel IP56
- 2) Internal with reliable switchers Schneider or ABB

LIGHTING

Even standard house is equipped with outdoor and indoor LED lamps.

INTERNAL FINISH

Wall panels, heat and sound insulating coating ISOTEX or equivalent, Premium paint, treated, according to the proposed color palette (more than 100 colors).*

FLOORS

Laminate flooring from pine structure, birch, oak, different colors.
It is also possible to use a flexible tiles.
In toilet/bathroom ceramic tiles (over 30 options).*

HEATING

Heating premium class. Infrared floor heating HEAT PLUS, with remote control and programming.

EXTERIOR WALLS

Wooden wall paneling (additionally possible (aluminum composite panel or fibers cement panels).

COVERED TERRACE

2 x (4.2 x 2.5 m) from the decking of brown or green tint.

DOORS

Standart from our catalog.

* Basic finish. Changes on request and extra charge.

* Furniture for an additional price.

* All modules have a standard equipment, but can be complete custom made from different materials.

COLOR PALETTES



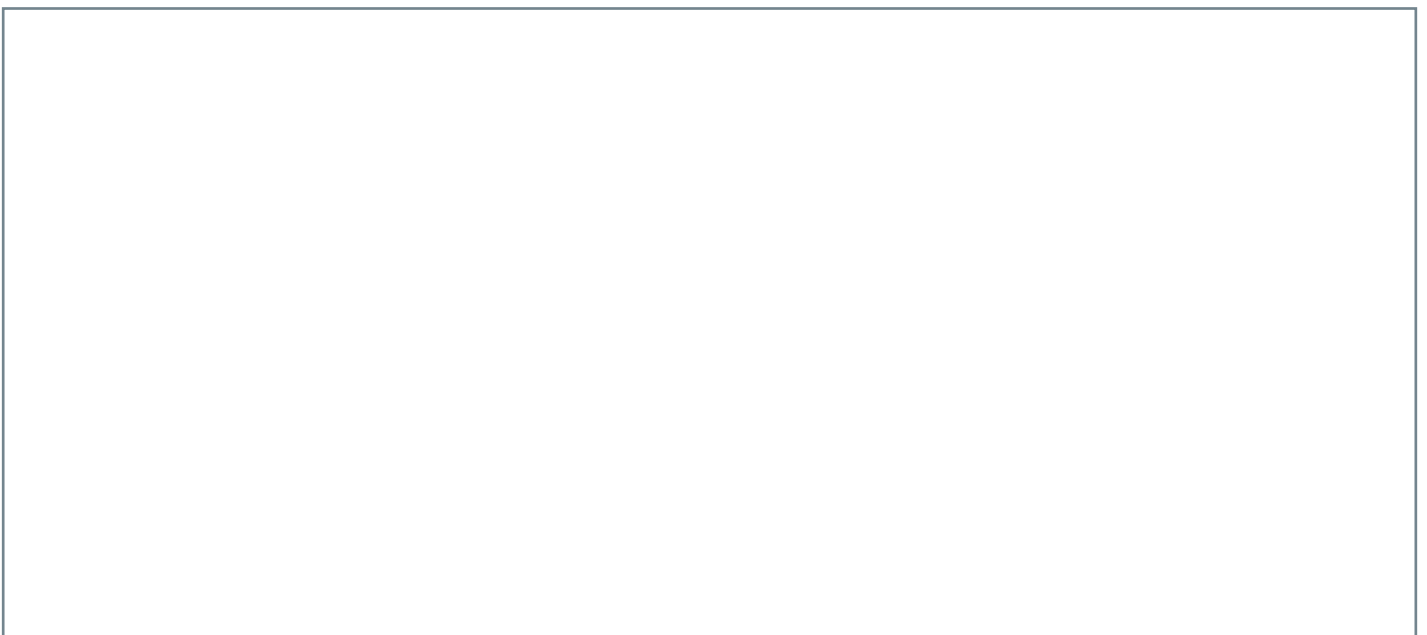
INTERIOR PLANS



Model A 28



Model A 48



Model T 76

Model A 28

PINSECTOR.COM



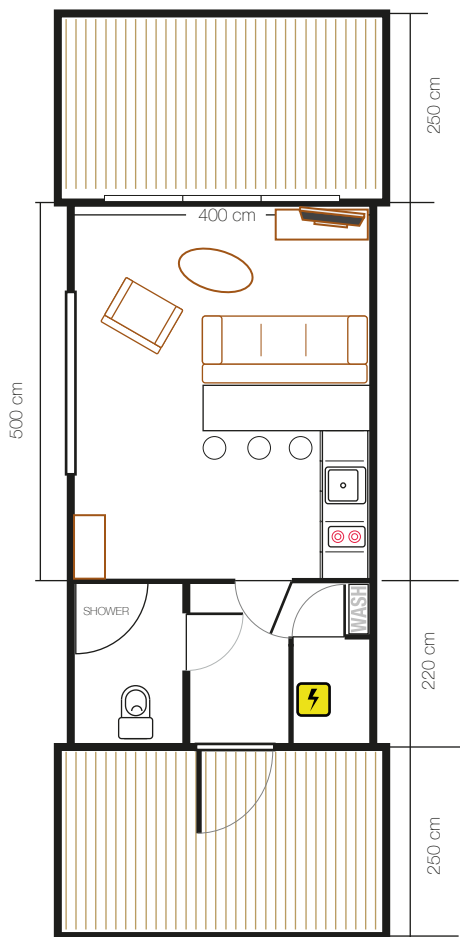
Model A 28

Frame and modular home

The first and most compact of the entire line of module houses. This cozy and small house, which is perfect for a permanent comfortable stay 1-3 persons or, for example, will be a great one for a holiday house or permanent home for a small family. Our modules can be placed with the possibility of expanding or increasing living space.

At 28 square meters of usable area fit everything you need - a hall area, living room, kitchen, bedroom and bathroom. Minimum area allows you to expend a minimum of energy for heating, and heat the house can be for a short time, even in the bitter cold with environmental and energy-saving heating system HEAT PLUS. This is home for those, who spends time outdoors, but appreciates the warmth and comfort of their homes.

In the future, home-module 28 can be supplemented external terrace, porch or household room, or even as an additional bathroom on the main area or on the second floor.



AREA

Full area:
28 m² + 10 m² + 10 m²

Living area:
28 m²

Terraces:
10 m² + 10 m²

DIMENSIONS

External dimensions (m)
(height x width x length)
3.6 4.6 12,2

Ceiling height: 1,9 - 2,5 m.

Weight: 5 tonnes.

Variants of planning:

- open studio
- studio with bathroom and kitchen

ADDITIONAL OPTIONS

at extra cost

- Toilets and autonomous sewerage
- External finish
 - Aluminum composite panels,
 - Fiber cement panels

- Kitchen with built-in sink (length 1500-2500mm).
- Security systems, television, household appliances.
- Furniture.

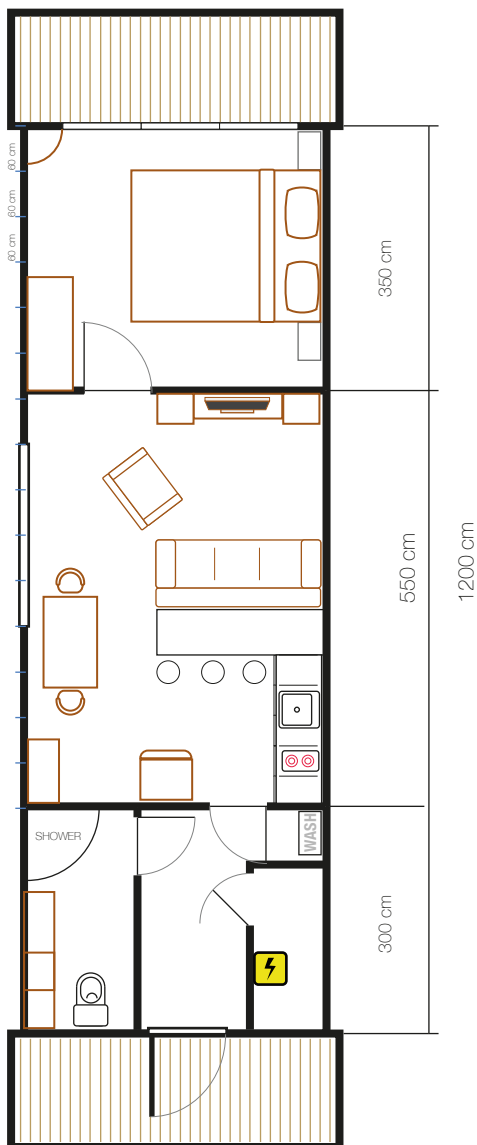
Model A 48

PINSECTOR.COM



Model A 48

Frame and modular home



AREA

Full area:
48 m² + 6.5 m² + 6.5 m²

Living area:
48 m²

Terraces:
6.5 m² + 6.5 m²

DIMENSIONS

External dimensions (m)
(height x width x length)
3.6 4.6 15

Ceiling height: 1,9 - 2,5 m.

Weight: 7 tonnes.

Variants of planning:

- open studio
- studio with bathroom and kitchen

ADDITIONAL OPTIONS

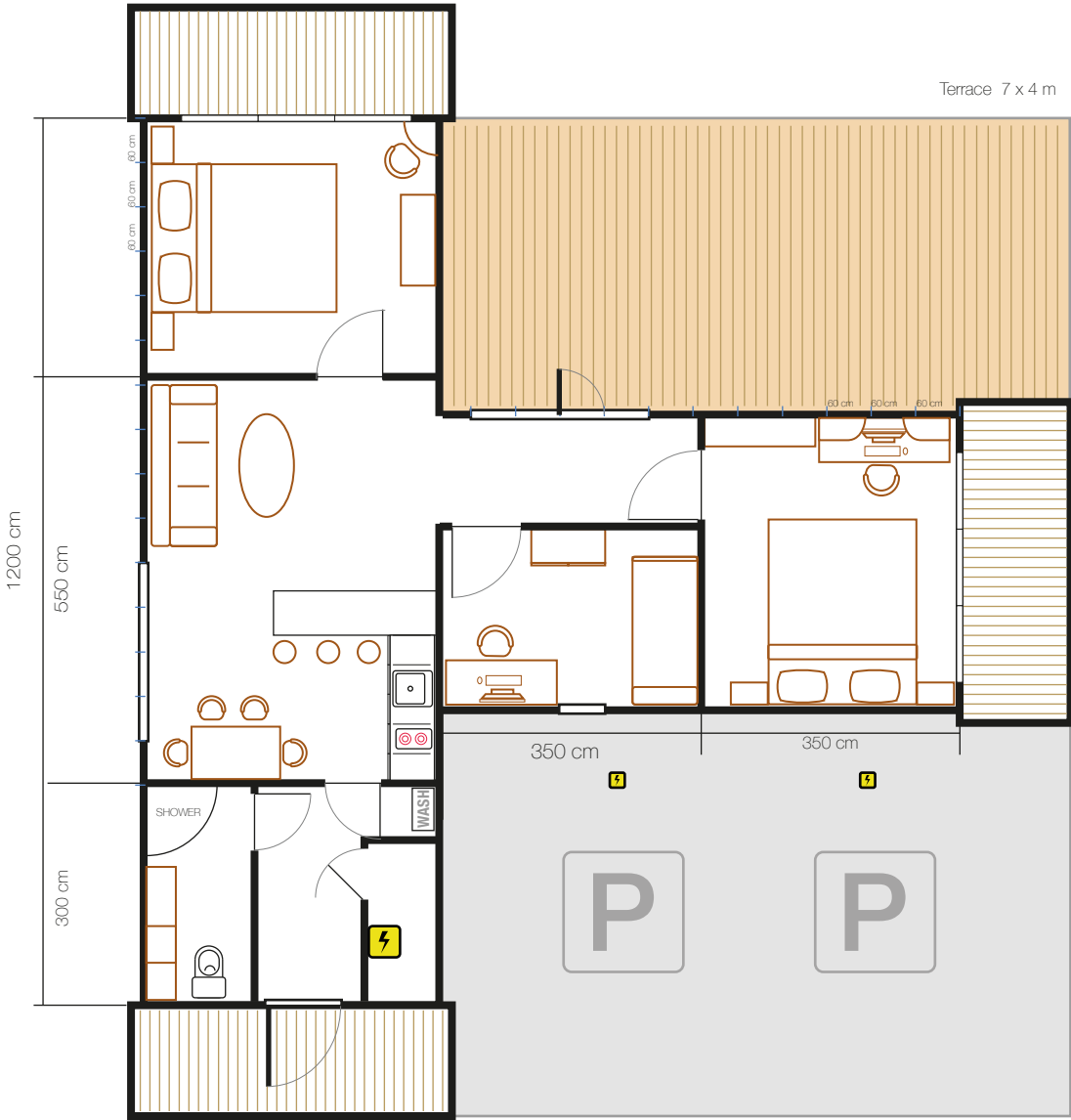
at extra cost

- Toilets and autonomous sewerage
- External finish
 - Aluminum composite panels,
 - Fiber cement panels
- Kitchen with built-in sink (length 1500-2500mm).
- Security systems, television, household appliances.
- Furniture.

Model T 76



Model T 76
Frame and modular home



Model T 76

PINSECTOR.COM

AREA

Full area:

76 m² + 6.5 m² + 6.5 m² + 6 m²

Living area:

76 m²

Terraces

6.5 m² + 6.5 m² + 6 m²

DIMENSIONS

External dimensions (m)

(height x width x length)

3.6 4.6 15

3.6 4.6 8.5

Ceiling height: 1,9 - 2,5 m.

Weight: 14 tonnes.

Variants of planning:

- open studio
- studio with bathroom and kitchen
- 3 bedrooms

ADDITIONAL OPTIONS

at extra cost

- Toilets and autonomous sewerage
- External finish
 - Aluminum composite panels,
 - Fiber cement panels
- Kitchen with built-in sink (length 1500-2500mm).
- Security systems, television, household appliances.
- Furniture.

Model H 124



Model H¹

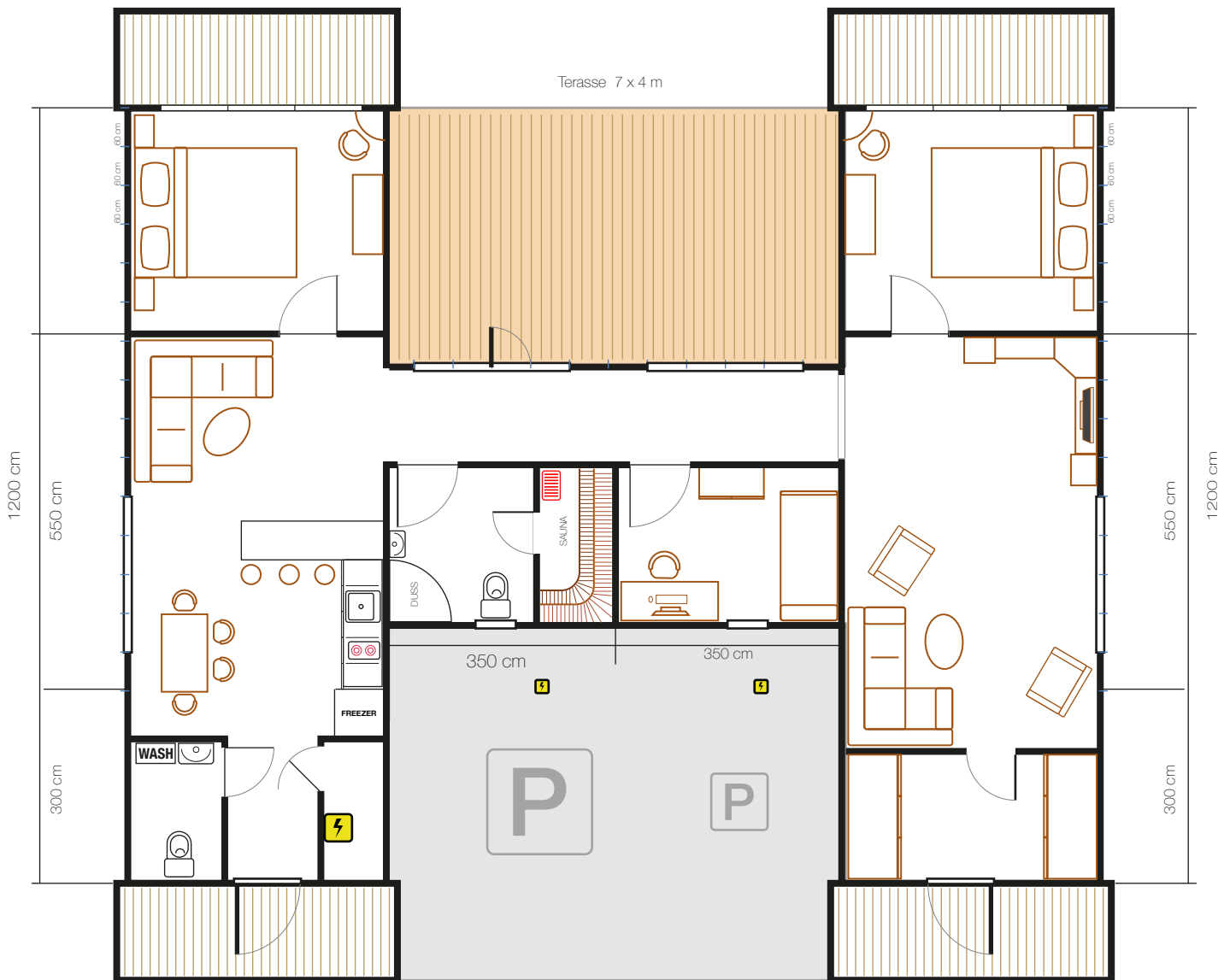
Model H 124 Frame and modular home



Model H 124

PINSECTOR.COM

Model H²



Model H 124

AREA

Full area:

124 m² + 6.5 m² + 6.5 m² + 6 m² + 6 m²

Living area:

124 m²

Terraces

6.5 m² + 6.5 m² + 6 m² + 6 m²

DIMENSIONS

External dimensions (m)

(height x width x length)

3.6	4.6	15
3.6	4.6	8.5
3.6	4.6	15

Ceiling height: 1,9 - 2,5 m.

Weight: 21 tonnes.

Variants of planning:

- open studio
- studio with bathroom and kitchen
- custom room planvvvv

ADDITIONAL OPTIONS

at extra cost

- Toilets and autonomous sewerage
- External finish
 - Aluminum composite panels,
 - Fiber cement panels
- Kitchen with built-in sink (length 1500-2500mm).
- Security systems, television, household appliances.
- Furniture.

Bars
Cutlery
The shops
Bathhouses
Stand-alone bars
Storage chambers
Refrigerators
Professional kitchen
Trade booths
Self-service kiosks
Offices
Transport stations
Beer minimills (*Czech technology*)

MULTIPURPOSE ALL-INCLUSIVE SOLUTIONS

Campsites
Seasonal and permanent Resort
Social settlements
Hostels
Mini-hotels
Private residential complexes

PINSECTOR.COM

info@pinsector.com